

SIU CARBONDALE: GETTING GREENER EVERY DAY



FUNDED BY THE
STUDENT GREEN FEE

This showcase provides highlights of some of the campus projects the **GREEN FUND** has contributed to or fully funded.

- Students initiated the **~\$10 Green Fee**.
- A campus-wide referendum revealed support by 73% of students who voted.
- The SIU Board of Trustees unanimously passed the fee on May 7, 2009.
- THE **GREEN FUND** provides a dedicated source of funding for on-campus sustainability projects.

THE SIU
COMMUNITY
DENTAL CENTER
HAS **REDUCED ITS
X-RAY FILM
USAGE BY 107
FILMS A DAY**
WITH A NEW
DIGITAL X-RAY
SENSOR.

FUNDED BY THE
STUDENT GREEN FEE





STUDENTS REMOVED MORE THAN 75% OF THE INVASIVE AUTUMN OLIVE AND HONEYSUCKLE AROUND THE POND NEAR THE TREE IMPROVEMENT CENTER, REPLACING IT WITH 165 NATIVE POLLINATING PLANTS.

FUNDED BY THE
**STUDENT
GREEN FEE**
SIU SOUTHERN ILLINOIS UNIVERSITY
CARBONDALE SUSTAINABILITY

BY INSTALLING
MOTION-SENSING
LIGHTS IN ANOTHER
ENGINEERING
COMPUTER LAB, WE
ARE PREVENTING **A
POUND OF
GREENHOUSE GASES**
FROM ENTERING
THE ATMOSPHERE
EVERY DAY.

FUNDED BY THE
STUDENT GREEN FEE





BY INSTALLING AN ELECTRONIC SIGNATURE PAD, THE COLLEGE OF ENGINEERING ADVISEMENT OFFICE HAS REDUCED ITS ANNUAL PAPER USAGE BY **4,000-6,000 PIECES OF PAPER.**



FUNDED BY THE
**STUDENT
GREEN FEE**

SIU SOUTHERN ILLINOIS UNIVERSITY
CARBONDALE SUSTAINABILITY

THESE COFFEE
SLEEVES AT
DELYTE'S ARE
MADE FROM
**90% POST-
CONSUMER
PRODUCTS AND
ARE 100%
COMPOSTABLE.**





NEW WINDOW FILMS IN A PARKINSON HALL LECTURE ROOM
BLOCK **99% OF HARMFUL UV RAYS** AND SIGNIFICANTLY
REDUCE GLARE ON THE SMARTBOARD.

FUNDED BY THE
**STUDENT
GREEN FEE**
SIU SOUTHERN ILLINOIS UNIVERSITY
CARBONDALE SUSTAINABILITY

BIKE LANES ADDED
ALONG LINCOLN DR.
AND NORMAL AVE.
PROVIDE **10,200**
LINEAR FEET OF
PAINTED BIKE
LANES TO
ENCOURAGE THE
SAFE AND EFFICIENT
USE OF BIKES ON
CAMPUS.

FUNDED BY THE
STUDENT GREEN FEE



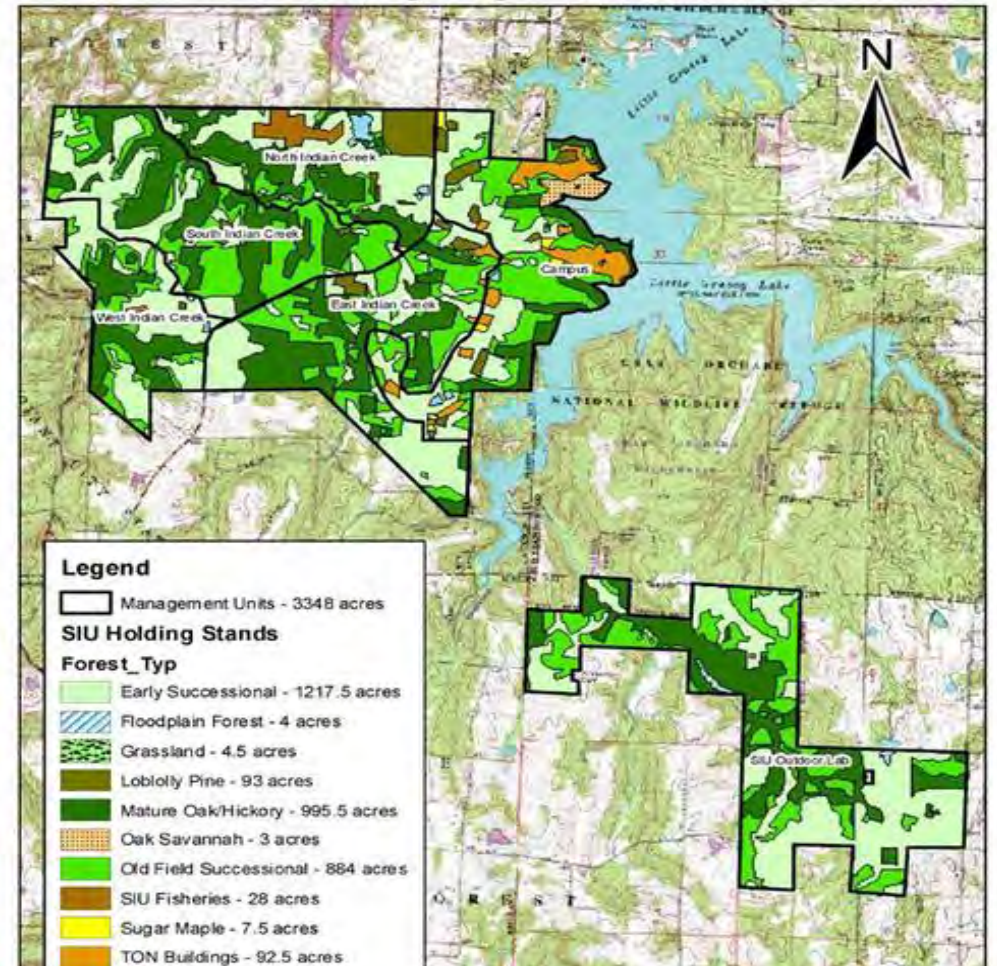


BY INSTALLING OCCUPANCY MOTION SENSING LIGHTS IN AN ENGINEERING COMPUTER LAB, WE'RE PREVENTING **A POUND OF GREENHOUSE GASES** FROM BEING EMITTED **EVERY DAY.**

FUNDED BY THE
**STUDENT
GREEN FEE**
SIU SOUTHERN ILLINOIS UNIVERSITY
CARBONDALE SUSTAINABILITY



SIU Holdings Vegetation Stands



WE FUNDED TOUCH OF NATURE ENVIRONMENTAL CENTER'S FIRST FOREST MANAGEMENT PLAN. IT INVOLVED INVENTORYING OVER **300 FOREST PLOTS** ON **3,200 ACRES**, PROCESSING AND AGING ABOUT **200 TREE CORES** AND COMPLETING **HUNDREDS OF HOURS** OF GIS MAPPING AND INVASIVE SPECIES SAMPLING.

SIU HAS AVERTED THE USE OF OVER 1 MILLION SINGLE-USE BOTTLES THANKS TO MORE THAN 35 WATER REFILL STATIONS ON CAMPUS.

'Water' you doing?

Save your bottle, save your money, save our planet!

Recycle and Reuse: Ease Landfill Pressure



Americans throw away 35 billion (35,000,000,000) plastic bottles per year. An estimated 1,500 plastic bottles end up in landfills every second. Only one in five plastic bottles gets recycled. *Reuse yours here.*

FUNDED BY THE
STUDENT GREEN FEE

Reduce: Save Your Money

- One refill each day this semester saves you two hundred dollars!
- Just \$6.50 of tap water hydrates fifteen thousand fans in Saluki Stadium.
- Tap water refills cost less than one percent of store-bought bottles.

Refresh and Refuel: Water's Health Benefits



Gives you energy
Improves your mood
Helps avoid headaches
Aids digestion
Boosts metabolism
Assists weight loss
Flushes out toxins
Promotes healthy skin
Beats bad breath
Refuel yourself here.



WE'VE REDUCED ENERGY USAGE BY 12,350 WATTS AT OUR STUDENT RECREATION CENTER. WE DID IT BY PARTIALLY FUNDING THE INSTALLATION OF 186 NEW LED LIGHT FIXTURES WHICH RUN 57% MORE EFFICIENTLY.





DESIGNED AND BUILT BY STUDENTS, THE MOTHER'S ROOM IN MORRIS LIBRARY PROVIDES A SANCTUARY FOR NURSING MOTHERS, **SUPPORTING MATERNAL AND CHILD HEALTH.**

FUNDED BY THE
**STUDENT
GREEN FEE**
SIU SOUTHERN ILLINOIS UNIVERSITY
CARBONDALE SUSTAINABILITY

WE SPONSORED **GREEN DAWG DAYS**, A **STUDENT-LED** FREE EVENT. APPROXIMATELY **60 PARTICIPANTS** ENJOYED ZIP LINING, ROCK CLIMBING, INTERPRETIVE HIKES, AND NETWORKING WITH LOCAL SUSTAINABILITY-MINDED ORGANIZATIONS AT TOUCH OF NATURE ENVIRONMENTAL CENTER.



FUNDED BY THE
**STUDENT
GREEN FEE**
SIU SOUTHERN ILLINOIS UNIVERSITY
CARBONDALE SUSTAINABILITY



WITH NEW LED LIGHTS, STUDENT FILMMAKERS NOW USE 30% LESS LIGHTING POWER THAN THEY DID BEFORE, SAVING OVER 10,000 KWH OF ENERGY DURING A TYPICAL 5-HOUR SHOOT.

FUNDED BY THE
**STUDENT
GREEN FEE**
SIU SOUTHERN ILLINOIS UNIVERSITY
CARBONDALE SUSTAINABILITY

OVER 900
GALLONS OF
WASTE OIL HAS
BEEN PROCESSED
INTO VIABLE
DIESEL FUEL FOR
PRELIMINARY IN-
VEHICLE TESTING,
COURTESY OF
RESEARCH AND
EQUIPMENT WE
FUNDED.

FUNDED BY THE
**STUDENT
GREEN FEE**

SIU SOUTHERN ILLINOIS UNIVERSITY
CARBONDALE SUSTAINABILITY



FUNDED BY THE
**STUDENT
GREEN FEE**
SIU SOUTHERN ILLINOIS UNIVERSITY
CARBONDALE SUSTAINABILITY

WE'RE KEEPING
CAMPUS LAKE
HEALTHY -
FUNDING
STUDENT
PROJECTS SUCH
AS **STATIONARY
BICYCLES** AND
**SOLAR-POWERED
FOUNTAINS.**



WE'RE SAVING AN ESTIMATED **\$14,493 ANNUALLY IN HVAC COSTS** FOR FURR AUDITORIUM WITH ENERGY EFFICIENCY MEASURES IMPLEMENTED THROUGH A FUNDED GRADUATE ASSISTANT POSITION.

FUNDED BY THE
STUDENT GREEN FEE





SIU IS A **BRONZE-LEVEL BICYCLE FRIENDLY UNIVERSITY**. WE FUNDED STUDENT WORK THAT RESULTED IN EARNING THE RECOGNITION.

FUNDED BY THE
**STUDENT
GREEN FEE**
SIU SOUTHERN ILLINOIS UNIVERSITY
CARBONDALE SUSTAINABILITY

OUR AGRICULTURE BUILDING HAS A **GREEN ROOF!** ABOUT **150** STUDENTS, VOLUNTEERS, FACULTY AND STAFF INSTALLED THE GREEN ROOF SYSTEM IN SEPTEMBER 2010.



FUNDED BY THE
**STUDENT
GREEN FEE**

SIU SOUTHERN ILLINOIS UNIVERSITY
CARBONDALE SUSTAINABILITY

NEW 60-WATT LED SPOTLIGHT BULBS ILLUMINATE THE STUDENT CENTER BALLROOMS AS WELL AS THE PREVIOUS 600-WATT BULBS WHILE USING A FRACTION OF THE ENERGY.

FUNDED BY THE
**STUDENT
GREEN FEE**
SIU SOUTHERN ILLINOIS UNIVERSITY
SUSTAINABILITY
CARBONDALE





YOU CAN DO **BASIC BIKE REPAIRS AND MAINTENANCE** AT THE **SEVEN** DO-IT-YOURSELF **BICYCLE FIX-IT STATIONS** THAT WE HELPED FUND ON CAMPUS.

FUNDED BY THE
**STUDENT
GREEN FEE**

SIU SOUTHERN ILLINOIS UNIVERSITY
CARBONDALE SUSTAINABILITY

SUSTAINABILITY OFFICE

Green Fund
Sustainability Pledge
Recycling
Sustainability Council

618/453-2786
sustainability.siu.edu
SIUCSustainability
@SIUsustain

WE HELPED
THE STUDENT
CENTER SWITCH
TO **LONGER-
LASTING
AND ENERGY-
EFFICIENT**
LED BULBS
FOR HALLWAY
SIGNAGE
IN 2014.

FUNDED BY THE
STUDENT GREEN FEE



MADE OF
**RECYCLED
PLASTICS,**
THIS PICNIC
TABLE USES
**SOLAR
ENERGY** TO
CHARGE
ELECTRONIC
DEVICES.

FUNDED BY THE
**STUDENT
GREEN FEE**

SIU SOUTHERN ILLINOIS UNIVERSITY
CARBONDALE SUSTAINABILITY





MCLEOD THEATRE'S NEW INDUSTRY-STANDARD LED LIGHTING IS **75% MORE EFFICIENT AND LONGER LASTING.**

FUNDED BY THE
**STUDENT
GREEN FEE**

SIU SOUTHERN ILLINOIS UNIVERSITY
CARBONDALE SUSTAINABILITY

CHECK OUT OUR
VERTICAL
GARDEN. WITH
TROPICAL
PLANTS, THIS
AGRICULTURE
BUILDING GREEN
WALL FEATURES A
**VERTICAL
HYDROPONIC
SYSTEM WHICH
PURIFIES THE AIR.**

FUNDED BY THE
STUDENT GREEN FEE





OUR CAMPUS **SOLAR ARRAY** HAS BEEN USED FOR RESEARCH, EDUCATIONAL AND OUTREACH ACTIVITIES BY FACULTY, STUDENTS AND STAFF.

FUNDED BY THE
**STUDENT
GREEN FEE**
SIU SOUTHERN ILLINOIS UNIVERSITY
SUSTAINABILITY
CARBONDALE



DINING HALL FOOD WASTE ISN'T WASTED AT SIU! IT IS DIVERTED FROM THE LANDFILL TO OUR FORCED-AIR COMPOST FACILITY, AND PROCESSED INTO A NUTRIENT-RICH MATERIAL.

FUNDED BY THE
**STUDENT
GREEN FEE**

SIU SOUTHERN ILLINOIS UNIVERSITY
CARBONDALE SUSTAINABILITY

OUR DENTAL CLINIC
CUT PAPER USE BY
ABOUT **240,000**
SHEETS EACH
SEMESTER BY
TRANSITIONING TO
A **PAPERLESS**
ELECTRONIC
RECORDS SYSTEM.

FUNDED BY THE
**STUDENT
GREEN FEE**

SIU SOUTHERN ILLINOIS UNIVERSITY
CARBONDALE SUSTAINABILITY





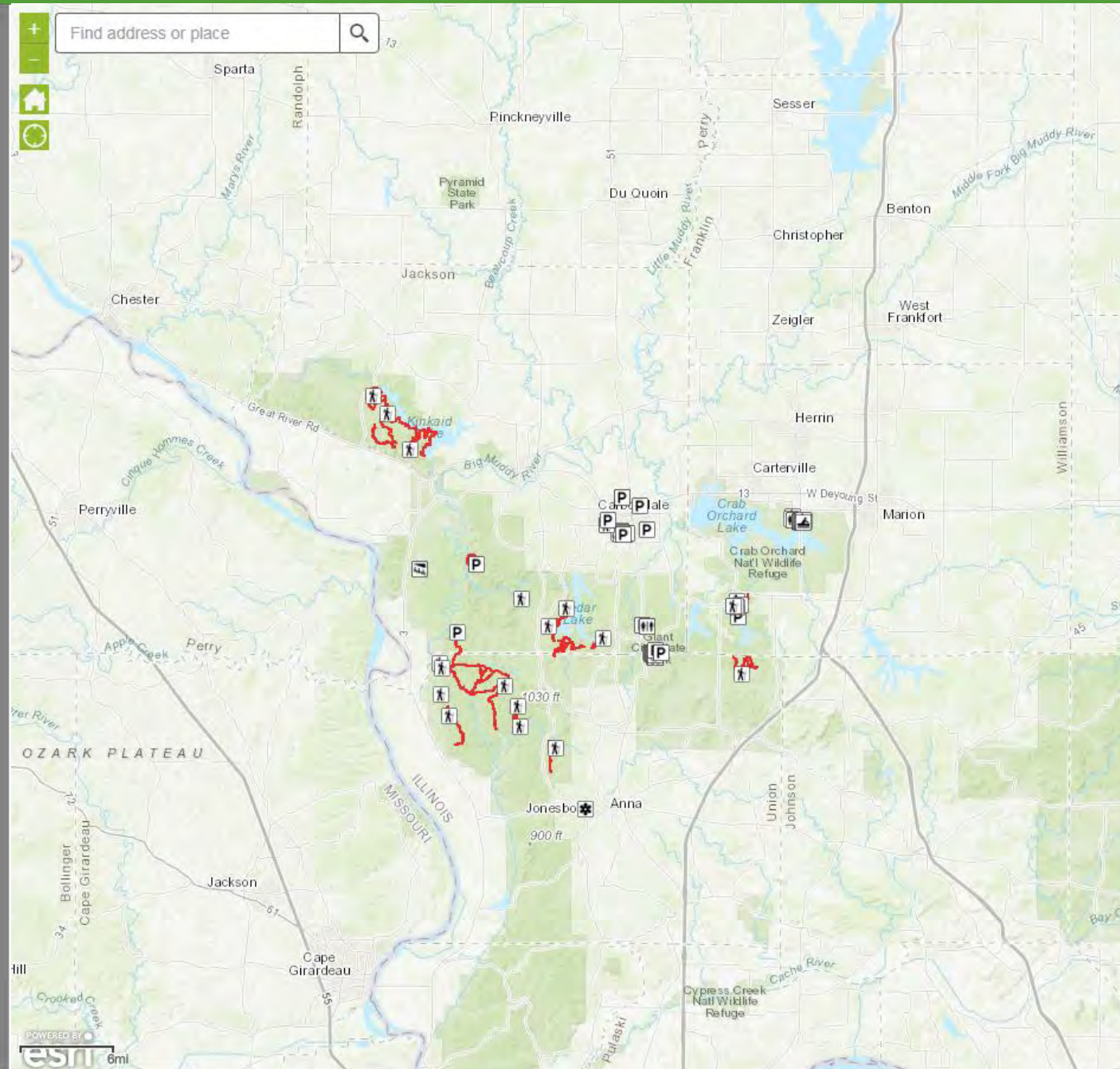
OUR STUDENTS ENJOY FRESH PRODUCE GROWN ON CAMPUS! SOME FOOD SERVED IN DINING HALLS IS GROWN ON THE **SIU SUSTAINABLE FARM**, WHICH PROMOTES SUSTAINABLE AGRICULTURE.

FUNDED BY THE
**STUDENT
GREEN FEE**
SIU SOUTHERN ILLINOIS UNIVERSITY
CARBONDALE SUSTAINABILITY



**WE'RE BUILDING ONE OF THE MIDWEST'S PREMIER MULTI-USE TRAIL SYSTEMS!
WE'VE CONTRIBUTED FUNDING FOR SURVEY AND PLANNING WORK INVOLVING
DOZENS OF PEOPLE, SUPPORTING TOUCH OF NATURE ENVIRONMENTAL
CENTER'S 30-MILE SYSTEM BEING CONSTRUCTED ON 114 ACRES.**

WE'RE HELPING YOU CONNECT WITH MOTHER NATURE IN SOUTHERN ILLINOIS. SIU STUDENTS HELPED CREATE A WEB-BASED TRAIL MAP TO PROMOTE AWARENESS AND USE OF NATURAL AREAS NEAR CAMPUS.



Trail Map around SIUC



This map features trails, parks and interesting locations around Southern Illinois University and the surrounding area. The purpose of this map is to promote outdoor exploration of SIUC students and Carbondale community members. This work has been funded and supported by SIUC Green Fee.

FUNDED BY THE
**STUDENT
GREEN FEE**

SIUC SOUTHERN ILLINOIS UNIVERSITY
SUSTAINABILITY
CARBONDALE

The map is prepared by



WE'VE
PURCHASED
**HUNDREDS OF
PLANTS** FOR
CAMPUS LAKE
SHORELINE TO
**PREVENT
EROSION** AND
**IMPROVE LAKE
AESTHETICS.**

FUNDED BY THE
**STUDENT
GREEN FEE**

SIU SOUTHERN ILLINOIS UNIVERSITY
CARBONDALE SUSTAINABILITY





MORE LOCAL SCHOOLCHILDREN GOT TO EXPERIENCE TOUCH OF NATURE THROUGH THE **ENVIRONMENTAL EDUCATION PROGRAM**, THANKS TO OUR GRADUATE ASSISTANT FUNDING.

FUNDED BY THE
**STUDENT
GREEN FEE**
SIU SOUTHERN ILLINOIS UNIVERSITY
CARBONDALE SUSTAINABILITY

STUDENTS
PRESENTED “ON-
AIR” COOKING
DEMONSTRATIONS
USING
INGREDIENTS
FROM SIU’S
SUSTAINABLE
FARM.

FUNDED BY THE
**STUDENT
GREEN FEE**

SIU SOUTHERN ILLINOIS UNIVERSITY
CARBONDALE SUSTAINABILITY



All of these projects or programs received partial or full funding from the SIU Carbondale Student Green Fund.

ACKNOWLEDGMENTS

- ~Green Fund grant awardees
- ~Sustainability Council members
- ~Sustainability Office team
- ~ Greg Wendt, Jon McMichen and CTE
- ~Campus representatives
- ~ SIU community
