

# SUSTAINABLE SALUKI NEWSLETTER

March 2017

---

## A Note from the Sustainability Coordinator

Hello and happy March!

This month, I am excited to share our progress with RecycleMania! This is a friendly competition among college and universities to promote campus waste reduction activities. Over an 8-week period each spring, participating colleges report their numbers for recycling, compost, and trash collected each week. You can see our ongoing results in the window of the Hub. Click also on the link below for more info and to see images of our students! SIU has been participating in this program since 2007, and we are seeing a larger student body sharing their passions about recycling this year!

In other news, April is Earth Month! We will be publishing an Earth Month calendar this year to help promote the wide variety of events happening around campus. More info can be found below.

I'm happy to share that our STARS recognition has been finalized! Please watch for a press release in the near future!

Sustainably yours,

Geory Kurtzhals

---



## Office Updates

### RecycleMania Update

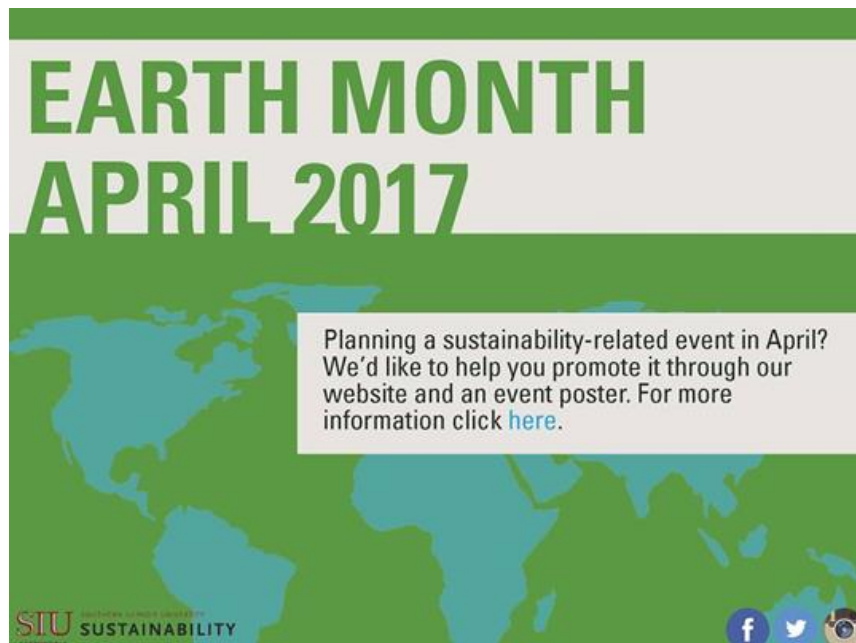


[RecycleMania](#) is still going strong! Students shared their personal reasons for recycling at our “Why I Recycle Photobooth” this past Monday in the Student Center. Reasons for recycling included plastic and waste diversion from the landfill, to address the disproportionate impacts of climate change around the world, protecting wildlife and ecosystems, and to preserve the environment for future generations. You can check out

SIU's results as they come in [here](#).

---

### Celebrate Earth Month!



### The Big Event



### News & Resources

[Give Your Vegetable Scraps New Life](#)

---

[China To Get Vertical Gardens In 2018 To Help Tackle Pollution](#)  
['False Spring' Could Spell Trouble for Crops, Bees](#)  
[Calculating Recharge of Groundwater More Precisely](#)  
[Fifth of World's Food Lost to Over-Eating and Waste, Study Finds](#)

---

## Jobs & Opportunities



### Local Opportunities

#### Native Plant Sale

April 1<sup>st</sup>, 2017: 8-2pm  
At John A. Logan College in Carterville, IL: Building H.

#### 2017 River Watch Workshops

Saturday April 1, 2017 from 9:00 AM to 4:00 PM.

The Illinois [River Watch](#) Network is a statewide, non-profit, volunteer stream monitoring program. Volunteers are trained and certified as “Citizen Scientists” to monitor and protect a local stream. Upon completing training and becoming certified, volunteers adopt a stream site and examine indicators of water quality like stream habitat and the diversity of macroinvertebrates. This workshop will take place at Southern Illinois University Carbondale inside [room 304 of the Life Science II building](#).

#### Touch of Nature SEEEC Conference

SEEEC is a conference geared towards (college) students, environmental educators, teachers, and individuals interested in Environmental Education. The event's mission is to empower students and educators to foster relationships, support, and networking across generational groups for the long term benefit of experiential and environmental education.

The conference will be held at Touch of Nature in beautiful Southern Illinois on March 10-12, 2017. Our keynote speaker, Michelle Nichols (from Chicago's Adler Planetarium) will be joining us to speak about practical environmental education programming relating to the upcoming Solar Eclipse! Click [here](#) to register!

**2017 Illinois Indigenous Plants Symposium: “Plant and Animal Relationship: It’s Complicated”** – click [here](#) to learn more!

March 31-April 2, 2017

John A. Logan Center for Business and Industry

700 Logan College Dr. Carterville, IL

Cost: \$25 per person by March 17, \$30 afterwards. Includes lunch.

[Register by March 17, 2017](#)

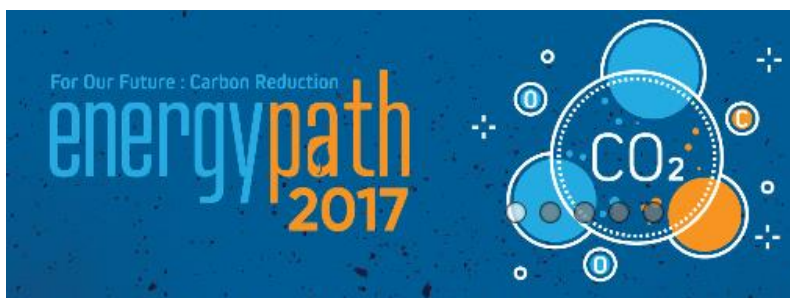
## Regional Opportunities

**The 2017 North Central Region Sustainable Agriculture Research and Education Program (NCR-SARE) - Graduate Student Grant Call for Proposals** is now available online [here](#).

Graduate students enrolled at colleges or universities in the North Central region can submit proposals for up to \$12,000 to fund sustainable agriculture projects that will be part of their educational programs. NCR-SARE expects to fund about 15 projects in the twelve-state North Central Region.

NCR-SARE will be accepting proposals for the Graduate Student Grant Program using our online submission system. More information about the online submission system can be found in the call for proposals. Proposals must be completely submitted to the online system [by 4 p.m. CDT, April 13, 2017](#).

## Energy path 2017 For Our Future: Carbon Reduction



Energy Path is a week-long event consisting of a three-day pre-conference energy camp and a one-day conference. The energy camps include hands-on training on sustainable energy and carbon reduction. The *Sustainable Energy Fund* is proud to provide full scholarships to students and educators on a first come, first serve basis to attend Energy path 2017 at DeSales University, Center Valley, PA July 24<sup>th</sup>-27<sup>th</sup>.

[Register now!](#) Time and space are limited.

## Jobs/Internships

[Nature Camp Specialist, Glen Mills, PA](#)

[Water Quality Specialist, Chicago, IL](#)

[Forestry Worker \(Seasonal\), Chicago, IL](#)

[State of Illinois Site Assistant Superintendent I, Metropolis, IL](#)

## Green Tip



[25 Green Spring Cleaning Tips](#)

[5 Awesome Ways to Clean with Essential Oils](#)

---

**\*\*\*Ink and Toner Cartridge Recycling:** This program is a recently developed and rapidly expanding method of diverting hazardous electronic waste from local landfills. Through this program you can recycle both your unused and used ink and toner cartridges, and possibly receive unused cartridges depending on our inventory. Click [here](#) to learn more about the process.

---

Want more news and tips?

Join us on social media: facebook [\(SIU Sustainability\)](#) or instagram [@SIUsustainability](#) or twitter [\(@SIUsustain\)](#)!



Sustainability Office  
Student Center – Mail Code 4418  
Southern Illinois University  
1255 Lincoln Drive  
Carbondale, IL 62901

\* To unsubscribe from the list send a blank email to:  
[SUSTAINABILITY-L-signoff-request@LISTSERV.SIU.EDU](mailto:SUSTAINABILITY-L-signoff-request@LISTSERV.SIU.EDU)